

FlySentry™

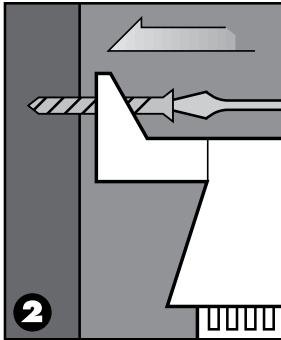


Congratulations on your purchase.

By reading this brief instruction sheet, you can be assured your FlySentry™ will be long lasting and control your fly problem as never before. Created by pest control professionals, FlySentry provides a high level of effectiveness that is sustained and consistent.

While FlySentry is a rugged, robust device made of high-impact plastic, it can be damaged if bumped by livestock. FlySentry is not responsible for damage resulting from animal contact or other forms of misuse.

FlySentry uses modern granular fly baits, which are not included. Please purchase bait separately.



REQUIRED TOOLS

1. Tape measure
2. Screwdriver-Common or Phillips Head
3. Any Granular Fly Bait



SYSTEM INSTALLATION

1. Using the tape measure mark a screw center location 6 inches above the ground.
2. Use one screw and locate the top mount - for best results, silos should be mounted no higher than 42 inches above the ground. Use one screw and secure the bottom bracket. Tighten the top screw until the top bracket is secure.

CAUTION: Over-tightening the screw may break the plastic mounting bracket.

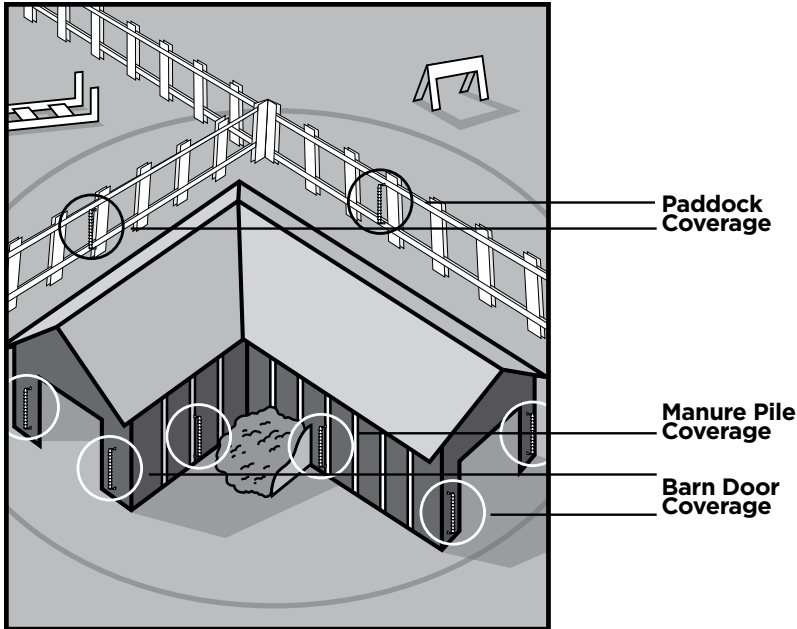
3. Fill the bait trays. *NOTE: The bait trays must be seated within the unit before filling.*

4. Place a bucket under the FlySentry Silo. Lift up the bait tray by the funnel and allow the fly bait in the center tube to empty into the bucket. *(This optional step saves bait and prevents bait from over-flowing.)*

5. Replace the cover assembly cap.



Placing FlySentry Silos: Create a Perimeter of Defense



BUILD LAYERS OF DEFENSE

The first rule is to remember that FlySentry attracts flies. Therefore, never put FlySentry inside a structure without additional silos located outside of the area to be defended. These outside silos should be located where active egg laying is taking place; i.e. manure piles, dumpsters, etc. Additional silos should be placed every 50 feet around the area requiring fly protection.

REFILLING INSTRUCTIONS

To refill your FlySentry unit, simply follow the installation instructions above.

MAINTENANCE AND CLEANING

For maximum effectiveness, check the FlySentry units at least monthly during fly season and add bait as needed. In times of extremely hot temperatures and high humidity, bait may partially liquefy and/or solidify. In this case, remove the bait tray, clean by immersing in water, and replace fly bait.

Fly Habitat Basics:

Between 0 - 12" above ground:

Females are feeding and looking for a place to lay eggs.

Between 12"- 42" above ground:

Active fly feeding zone.

Approximately 42" above ground:

Flies are resting not feeding.

NOTE: Replacement bait trays are available for purchase.

www.fly Sentry.com