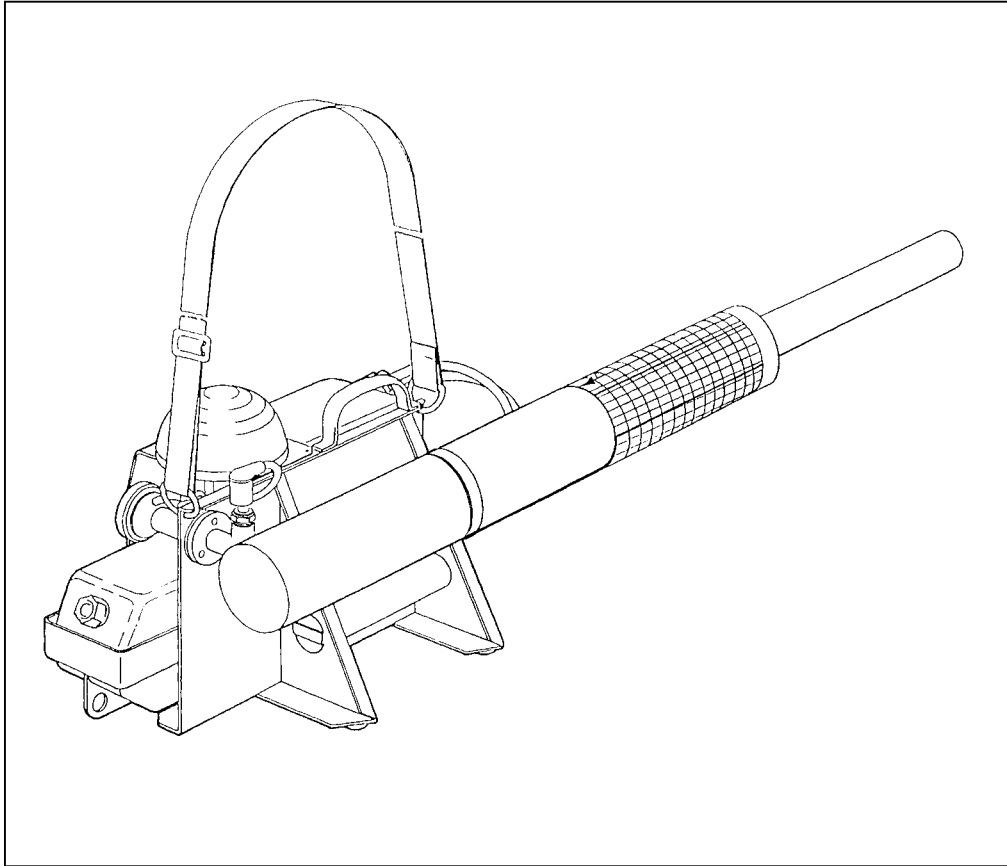


Operating Instructions  
**pulsFOG K-10 SP • K-10 Standard • K-10/O**  
Portable Thermal Fogger



**pulsFOG®**

**Dr. Stahl & Sohn GmbH**

Abigstrasse 8 · D-88662 Überlingen/Germany

Tel: ++49 7551 9261 0

Fax: ++49 7551 9261 61

E-Mail: [info@pulsfog.com](mailto:info@pulsfog.com)

# 1. SAFETY INSTRUCTIONS AND ACCIDENT PREVENTION

**Warning: Read, understand and respect these safety precautions before operating machine. Failure may lead to a fire hazard. Operator must be trained by pulsFOG authorized personnel.**

- Check the functional safety of the unit each time before using it.  
For stationary operation, ensure safe standing for the unit.
- Never fill in fuel when the unit is hot!
- Never fill fuel into the solution tank!
- When filling one of the tanks or when inspecting the carburettor, smoking is prohibited in the immediate environment.
- Never let the unit run without supervision.  
Operator shall close the fogging tap immediately after sudden stop of engine.
- Do not fog in rooms where there is a danger of dust explosion. (e.g. grain mills)
- Do not fog directly into a pipe with a similar diameter as the fogging pipe of the unit (cooling effect of the unit is interrupted and a combustible concentration of aerosols may occur).
- Do not fog with combustible liquids into pipes or tunnels without ventilation (except with BIO-units ) because of fire and explosion hazard.
- Do not fog any liquids with a flash point of less than 75 ° C.
- For fogging inflammable products, only use „O“ series units or „BIO“ series units with separate water injection (e.g. K-10/O or K-22 BIO) equipped with automatic cut off device for the fogging solution.
- Never fog more than 2,5 ltr. of an oilbased or similar inflammable liquid into an enclosed space of 1000 m<sup>3</sup> and never more than 10 ltr. of a waterbased liquid (with less of 50% water) into a space of 1000 m<sup>3</sup> or another corresponding amount of liquid in a corresponding space volume.
- If a combustible atmosphere is established a source of ignition may cause fire (e.g. electric sparks). Therefore such sources have to be eliminated or turned off.
- When fogging liquids with a possible fire hazard (e.g. oils, alcohols ...) a fire extinguisher shall be provided near the unit.
- Do not transport hot units in enclosed vehicles. Never ship the unit with fuel or agent in the tank. If there is still fuel in the tank during transportation, the unit must be upright and secured against tilting.
- Do not touch the fogging pipe while the engine is running and up to 30 min after run.  
Do not touch the protection jacket (cooling jacket) for 30 minutes after stopping the engine (danger of injury due to radiated heat)!
- Eliminate any leakage occurring on the unit without delay.
- Have the unit checked regularly by a suitable qualified technician able to service it in accordance with the safety rules and the accident preventive regulations or at the manufacturer's service workshop.
- Observe the instructions for use supplied by the pesticide manufacturer.
- When fogging, use protective equipment such as protective clothing, gas mask, protective gloves and ear protectors as applicable. The type and quality of the protective equipment to be used depend on the national legal obligations. In Europe the filter for the gas mask (full-face mask) must meet the protection category A2 B2-P3 as a minimum requirement.

## 2. SPECIFICATIONS

<b>pulsFOG type:</b>	<b>K-10/O</b>	<b>K-10 Standard</b>	<b>K-10 SP</b>
Dimensions	129x30x36 cm		106x29x33 cm
Empty weight	8,5 kg		7 kg
Gross weight (filled tanks)	19,5 kg		13,5 kg
Capacity of chemical tank	9 ltr.		5 ltr.
Capacity of fuel tank	2 ltr.		2 ltr.
Starting current (4x1,5 V cells)	6 V DC		6 V DC
Combustion chamber volume	300 cm <sup>3</sup>		300 cm <sup>3</sup>
Gross max. power of engine	17,5 kW/24,1 h.p./15300 kcal/h		
Max. fuel consumption	1,9 ltr./h		1,9 ltr./h
Flow rate with 0,8 nozzle		see 7.2	
Operating pressure in chemical tank	0,2-0,35 bar		0,2-0,35 bar
Max. sound pressure level during fogging	98 db		98 db
Operating temperature* (ambient air temperature 20 ° C)			
on cooling jacket, max.	35 ° C		35 ° C
Temperature on cooling jacket 10 minutes after engine stop	120 ° C		120 ° C
Temperature of combustion gas at resonator outlet when idling	550 ° C		550 ° C
OPTIONAL EQUIPMENT	Automatic cut off device for inflammable fogging solutions Extralong protective grating Flame head Air-agitator		
ACCESSORIES	Funnel for chemicals Fuel pitcher Cleaning brush for resonator Ear protectors		
RECOMMENDED ACCESSORIES	Protective clothing Gas mask with filter A2B2P3 Horticultural kit cpl. consisting of: Bucket 10 ltr., 2 stirring sticks, Measure 2 ltr. Measure 0,25 ltr.		
SPARE PARTS	Spare parts set with gaskets and diaphragms		

\* measured during fogging

## **pulsFOG K-10 SP • K-10 Standard • K-10/O**

Portable thermal foggers, type K-10 SP and K-10/O suitable for use in greenhouses, storerooms, warehouses and livestock buildings with suitable fogging solutions.

K-10/O type not suitable for wettable powder formulations.

Portable thermal fogger, type K-10 Standard suitable for use in greenhouses with **water-based**, non flammable fogging solutions.

### **3. SUMMARY OF OPERATION**

#### **3.1 Preparations**

- a) Fill the fuel tank completely using the pulsFOG fuel pitcher (1,8 ltr. max.). Close the lid tightly.
- b) Remove the solution tank and fill in the solution to be fogged using the red solution funnel.
- c) Remount the solution tank to the unit and firmly tighten the lid with the passage.
- d) Close the fog tap.

#### **3.2 Starting the engine**

- a) Open the adjustable screw on the carburettor by up to  $\frac{1}{3}$  -  $\frac{1}{2}$  turn (with the unit heated up,  $\frac{1}{3}$  of a turn only).
- b) Press the primer slowly several times with your left and flat hand until the engine starts (pump no more than 5 times). If the engine does not start after having pumped 5 times, open the fuel tank lid and continue pumping until the engine starts. Close the lid.
- c) After starting the engine, turn the adjustable screw on the carburettor (usually it requires slight opening) so that a powerful, deep engine sound is obtained. (Avoid high frequency engine-run).

#### **3.3 Fogging**

With the engine running, open the fog tap: The unit starts fogging.

#### **3.4 Interrupting the fogging process**

With the engine running, close the fog tap, re-open as necessary.

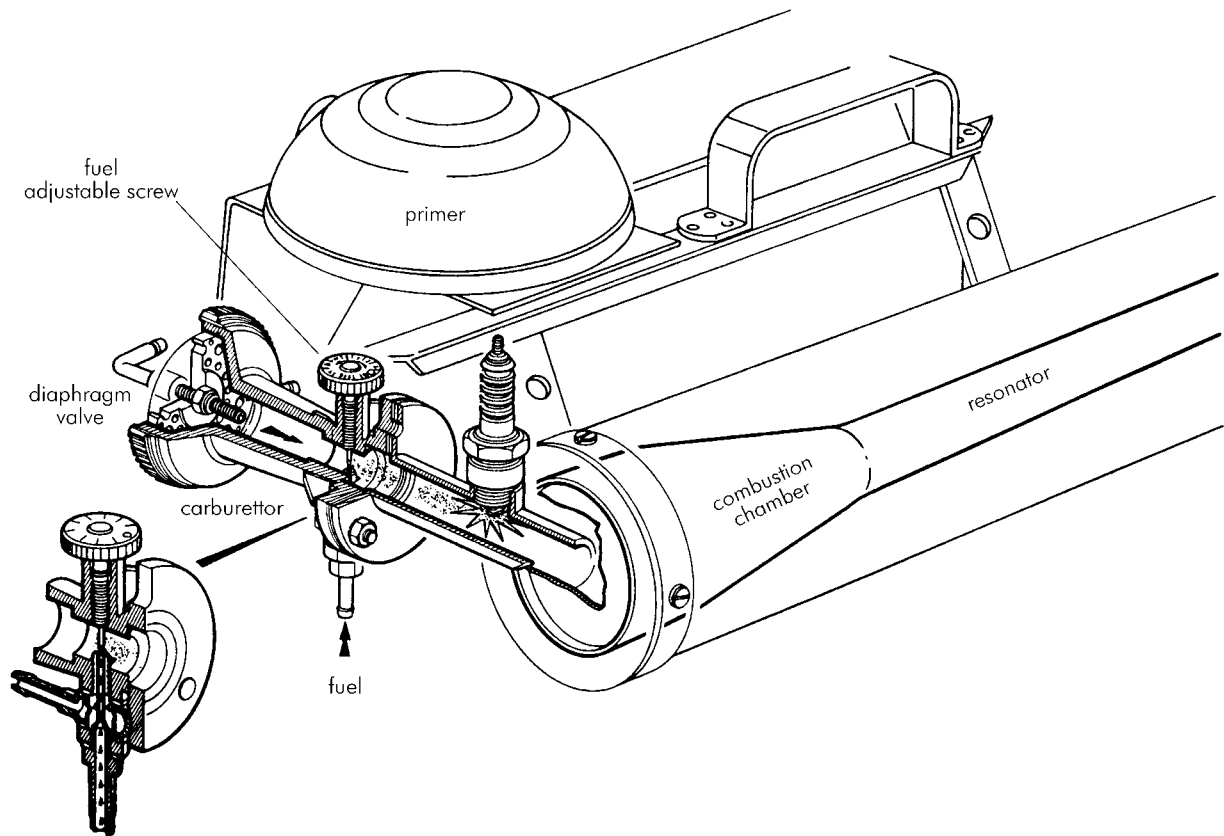
#### **3.5 Stopping the fogging process (proceed in the following order):**

- 1) With the engine running, loosen the chemical tank lid (pressure is released).
- 2) Close the fog tap by hand. Close the chemical tank lid.
- 3) Stop the engine (close the adjustable screw on the carburettor).

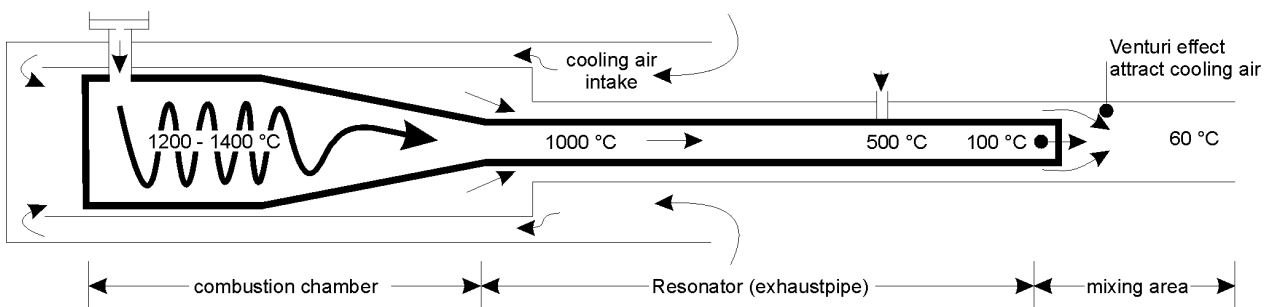
#### **3.6 Posterior action**

Let the unit cool down, rinse the solution tank with water or cleaning oil and fog briefly.

## 4. TECHNICAL DESCRIPTION



The unit works according to the pulse-jet principle without any mechanically moving parts. When pressing on the primer or starting button, a fuel/air mixture is produced in the carburettor, blown into the combustion chamber and ignited by the spark plug. A pulsating combustion forms at approximately 80 – 100 explosions per second, controlled by an air diaphragm valve and a fuel adjustable screw on the carburettor. A limited overpressure of 0,2 – 0,35 bar is redirected from the carburettor to the chemical tank through a non-return valve. The pressure in the chemical tank conveys the fogging liquid through an ON/OFF valve and a dosing nozzle to the end of the exhaust pipe. There it is injected into the exhaust stream coming from the combustion chamber. For a fraction of a second (0,05 – 0,1 s), kinetic and thermal energy (600 – 700 kcal/litre of fogging liquid) acts on the injected solution, which is thereby torn to ultra-fine aerosols. The liquid partially vaporizes and converts into a visible fog by immediate condensation in the relatively cool ambient air.



## 5. PREPARATIONS FOR STARTING

- 5.1 Fill the **fuel tank** with pure common petrol (gasoline) of normal grade (also unleaded); avoid supergrade fuel, if possible. The maximum filling capacity is sufficient for emptying the chemical tank. When filling in fuel, always use the graduated fuel pitcher with sieve.

### Warning:

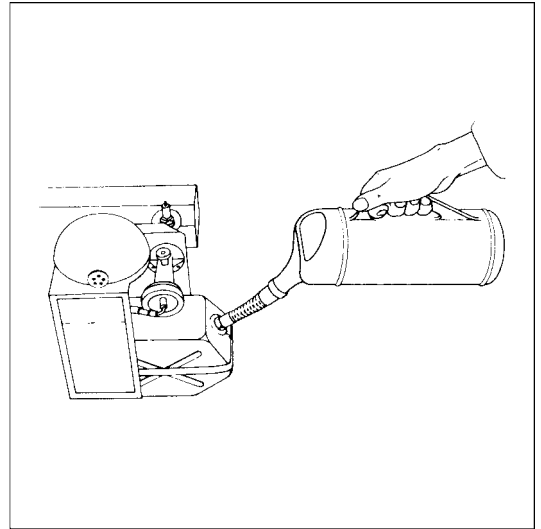
Never start a fogging process with the tank less than half filled. If fuel temperature is less than 10 ° C the engine may start but without powerful run. Allow the fuel to warm up to room temperature.

- 5.2 Run the **engine** briefly and stop it again (see 6.0). If the tank is less than  $\frac{1}{4}$  full, you should avoid sudden movements with the unit as far as possible and not exceed an angle of 45 upwards or downwards.

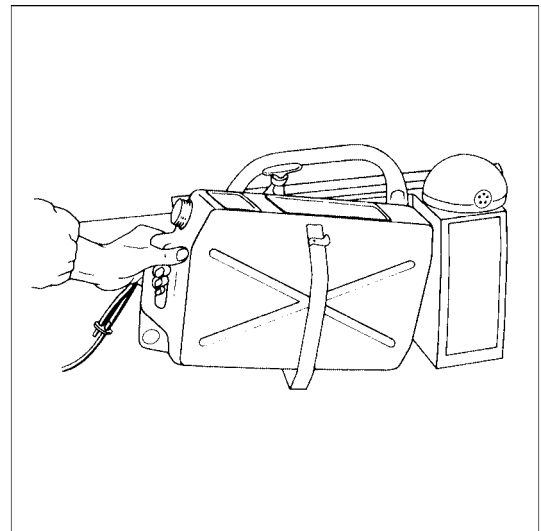
- 5.3 Fill the **chemical tank** as follows: Open the tank lid, remove the tube from the tank and hang it over the dosing nozzle on the fogging pipe. Release the tank holding strap and remove the chemical tank with the opening pointing upwards. The tank may only be filled with a maximum of 9 ltr. of fogging solution (K-10 SP = 4,5 ltr.). Use the funnel with sieve for filling. After filling, close tank with lid. Remount solution tank to the unit. Remove lid. Refix lid with passage and laminate gasket.

### Warning

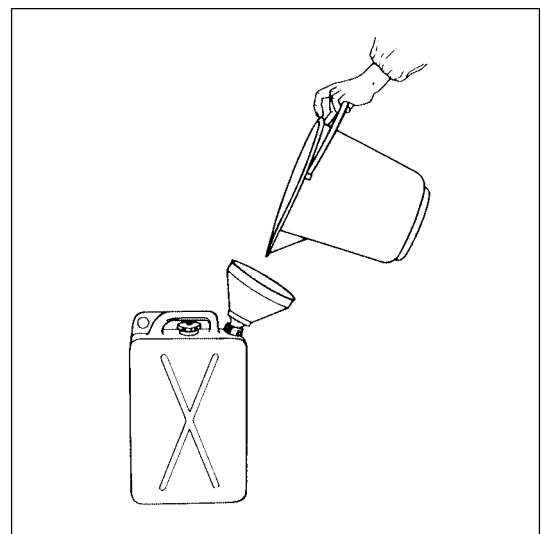
Viton hoses are not resistant to chemicals containing dichlorvos (DDVP) or Aceton as solvent. Use in that case the yellow Novoprene hoses from pulsFOG.



filling the fuel tank



detaching the chemical tank



filling the chemical tank

#### 5.4 Check tightness of dosing nozzle

##### Warning:

Toxic chemicals of fogging solution may be sprayed by tank pressure onto your body and face if dosing nozzle is not well sealed.

### 6. STARTING THE ENGINE

- a) Set the fog tap to the closed position.
- b) Open the fuel adjustable screw on the carburettor to the starting position (approx.  $\frac{1}{3}$  to  $\frac{1}{2}$  turn).

##### Warning:

Opening too far would feed excessive fuel to the engine, which would cause engine and carburettor choking (flooding). Read 6.2 c.

- c) With your left hand press the primer slowly down several times and each time keep it pressed for some seconds to prolong the ignition. Do not pump more than 5 times. Read 6.2 c.

##### Warning

With the fuel tank full, do not press the primer powerfully since this would cause carburettor flooding (excessive fuel injected). Read 6.2 c

#### 6.1 Adjusting for continuous operation

After the engine has started and warmed up (approx.  $\frac{1}{2}$  minute), readjust the adjustable screw on the carburettor (usually, open further) until the engine runs with a powerful, deep sound (low frequency = optimum performance).

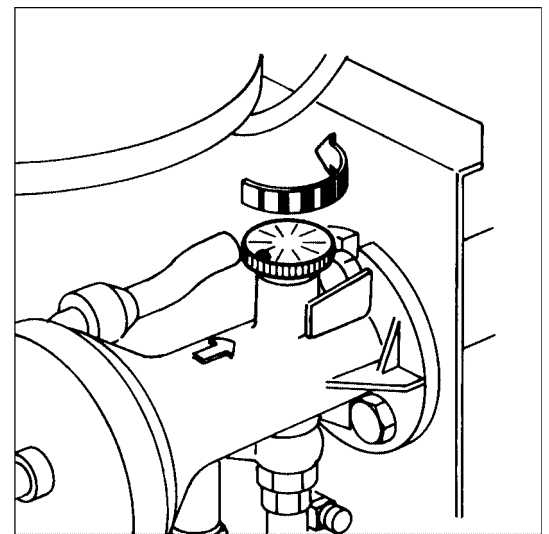
##### Warning:

A high sound (high-frequency engine run) means poor engine performance which causes overheating and an excessively large droplet spectrum.



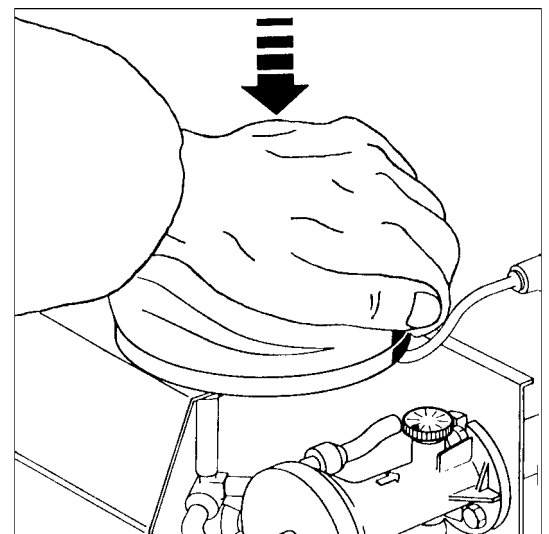
a)

set the fog tap to the closed position



b)

open fuel adjustable screw  
 $\frac{1}{2}$  turn cold engine,  $\frac{1}{3}$  turn hot engine



c)

press primer slowly

## 6.2 If the engine does not start:

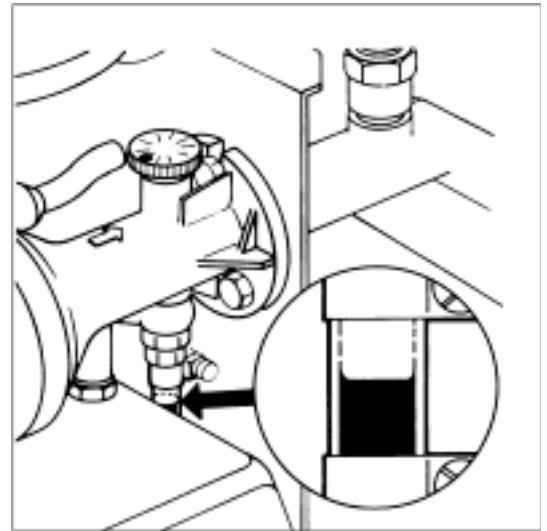
- a) Check the fuel supply, i.e. fuel must be visible in the transparent tube above the red fuel valve (No. 7980); if this is not the case, continue pumping until fuel becomes visible. Even if no fuel becomes visible the red fuel valve may be blocked (moving part sticks). Disassemble the valve and blow with the mouth through (respect arrow direction). Also the fuel filter inside the tank may be choked.
- b) Check spark plug and clean it.
- c) If the carburettor is flooded (pumped too strongly or too often), proceed as follows: Loosen the fuel tank lid and continue pumping (i.e. blow through and dry the carburettor) until the engine starts, or single explosions occur. When the engine runs, close the fuel tank lid.

### Reason:

If the tank lid is not hermetically closed, the overpressure created by pumping escapes, and no fresh fuel is injected into the carburettor. On the other hand, fresh air is supplied which gasefies the excessive fuel. Since the ignition is also actuated with each pumping operation, the unit starts immediately as soon as the carburettor is sufficiently dry and an ignitable mixture has formed.

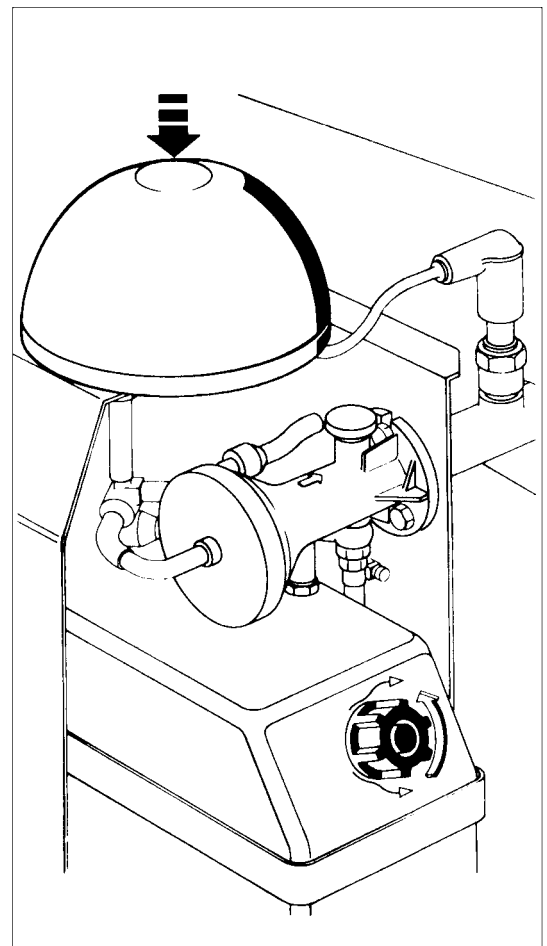
### Warning:

Do not forget to close the fuel tank lid again!



a)

fuel visible in the transparent tube



c)

open fuel tank lid and pump again

## 7. FOGGING

Open the fog tap. The unit starts fogging immediately.

**Note:** The engine frequency may now vary slightly under load. In this case, readjust the adjustable screw on the carburettor once more (usually, open a little more).

### 7.1 Interrupting the fogging process

With the engine running, close the fog tap; re-open as necessary.

**Warning:**

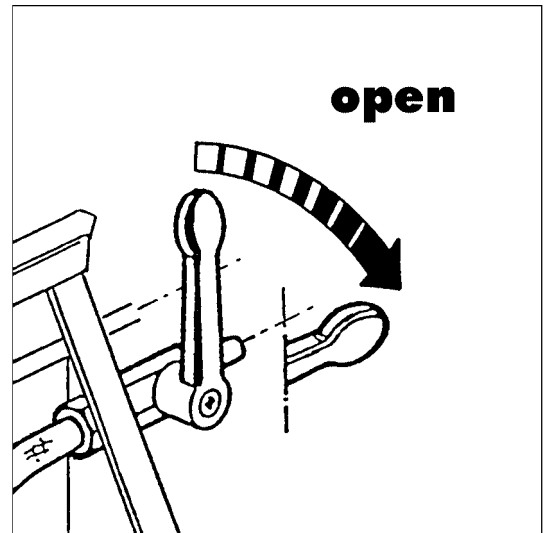
For short interruptions ( $\frac{1}{2}$  minute), it is not necessary to stop the engine.

**Warning:**

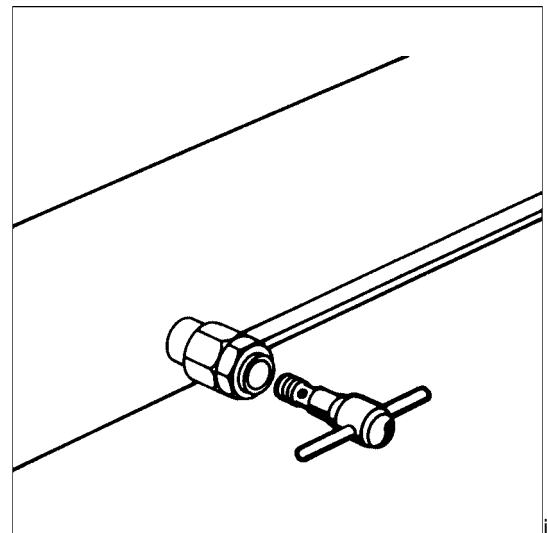
Towards the end of the fogging process, usually there is only little fuel left in the tank. Therefore you should avoid sudden movements in order to prevent air from being taken in by the fuel suction piece. A single air bubble may cause engine standstill. This may lead to a fire hazard if unit is not equipped with an automatic cut-off device for the fogging solution or if operator forgets to shut immediately the fog tap.

### 7.2 Flow rate and droplet size

are controlled by interchangeable dosing nozzles. The flow rate depends on the unit type, the set power of the motor and the viscosity of the liquid. This should be checked on a case-to-case basis.



fogging: open the fog tap



interchangeable dosing nozzle

	Fogging solution: diesel-oil	Fogging solution: water
Flow rate with dosing nozzle size 0,8 mm <u>with</u> automatic cut-off device	10 l/h	9 l/h
Flow rate with dosing nozzle size 0,8 mm <u>without</u> automatic cut-off device	13,5 l/h	13 l/h

### 7.3 Stopping the fogging process

Proceed in the following order:

- a) Loosen the lid of the chemical tank (release pressure) and wait until the unit stops fogging.
- b) Close the fog tap.
- c) Stop the engine (by closing the adjustable screw on the carburettor).

#### Warning:

When you have finished fogging, always release the solution tank from pressure first and close the fog tap before stopping the engine.

**Never stop the engine before the fog tap is closed.**

#### Reason:

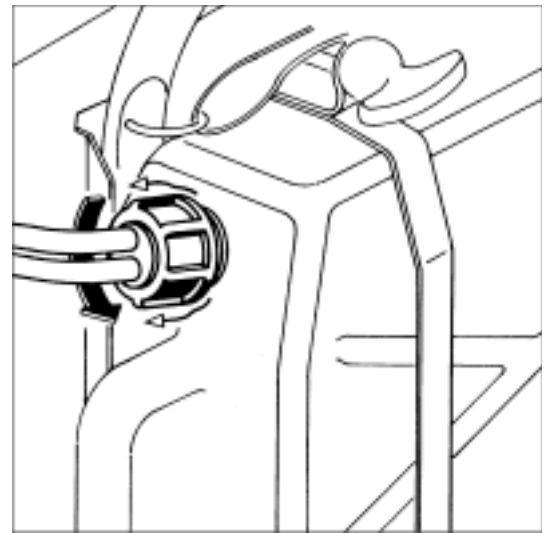
(In case the unit is not equipped with an automatic cut off device.)

If you stop the engine before having closed the fog tap, the fogging solution remaining in the tank continues to flow to the very hot fogging pipe where it may cause fire hazard or form black sooty clouds causing dirt on the spark plug and in the carburettor. Venting the solution tank by releasing the tank lid **before** stopping the engine offers the additional advantage that the liquid still present in the fog solution conduits fogged off and does not remain in the conduits.

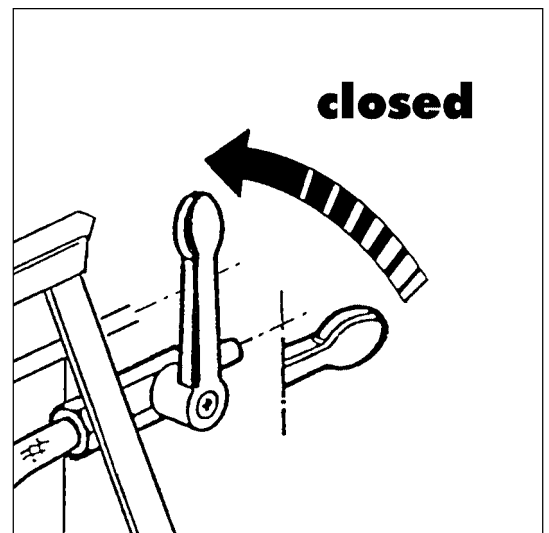
#### Warning:

**Refill fuel only with the unit cooled down.**

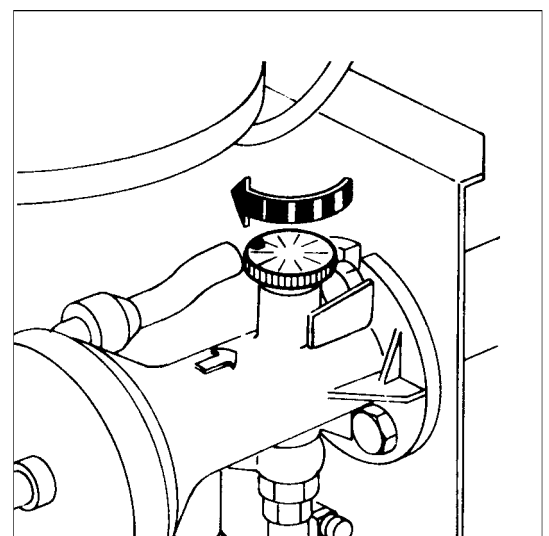
The heat radiation after stopping the engine will heat up the double cooling jacket of the fogging tube. Do not touch the unit for approx. 20 minutes.



a) loosen the lid of chemical tank (release pressure)



b) close the fog tap before stopping the engine



c) close adjustable screw to stop the engine

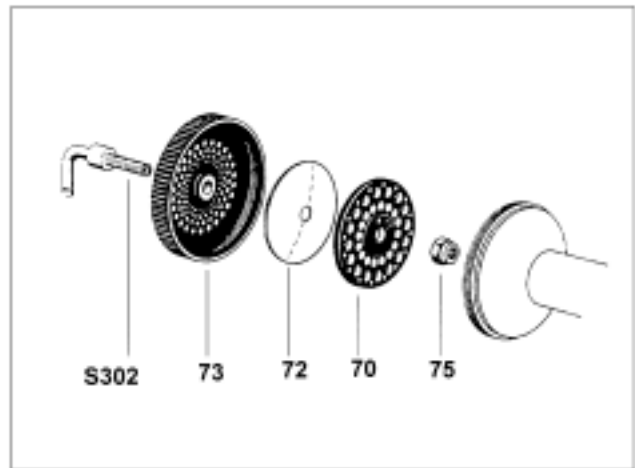
## 8. CLEANING

8.1 The unit must be cleaned after each fogging application. For this purpose, remove the solution tank and rinse it with water. Subsequently, fog approx. 1 ltr. of clear water in order to clean the fog solution conduit. Adding a small quantity of alcohol or just a few **drops** of dishwashing agent is helpful.

### 8.2 Final cleaning

As described in section 10.1, but with additional cleaning of the carburettor diaphragm, since some fog usually penetrates the carburettor during a fogging application and may cause blocking. The carburettor diaphragm can be cleaned as follows:

- a) Unscrew the diaphragm valve and blow through from both sides with compressed air.
- b) Unscrew the diaphragm valve and rinse in hot water (approx. 60 ° C).
- c) Unscrew the diaphragm valve and rinse with hand-warm water to which cleaning alcohol has been added. Cleaning with water and alcohol is especially recommended after fogging with formalin.



- d) Unscrew the diaphragm valve and put it into a vessel with fuel for 5 minutes. Subsequently dry it with compressed air.

## 9. STORAGE

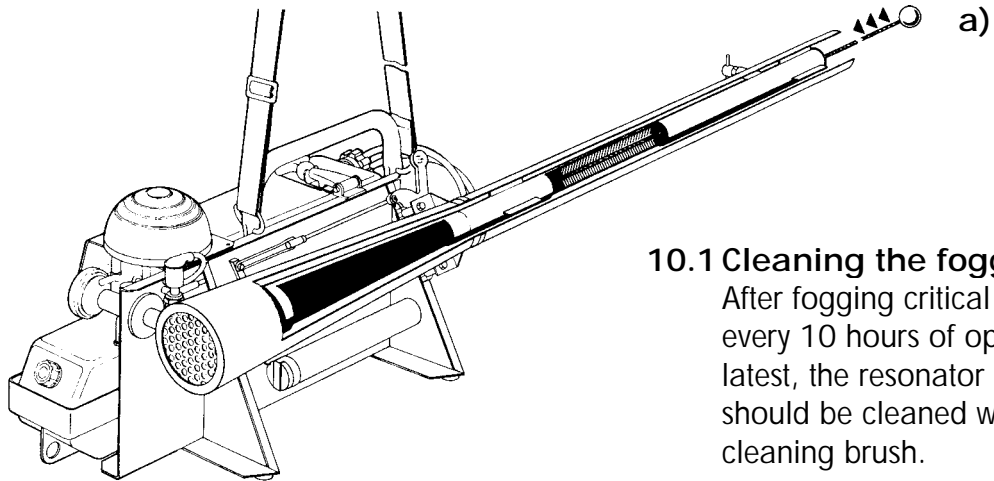
If you want to keep residual quantities for a short time in the solution tank, remove the suction tube from the tank.

When the unit is not going to be used for some time, drain the fuel tank and store the unit in a cool and clean condition in the cardboard packaging. If you use the unit weekly, refill the fuel tank completely after the unit has cooled down and store it in a safe place, protected against tilting or falling down. The formation of condensate is prevented by the tank being either completely full or completely empty!

### Warning

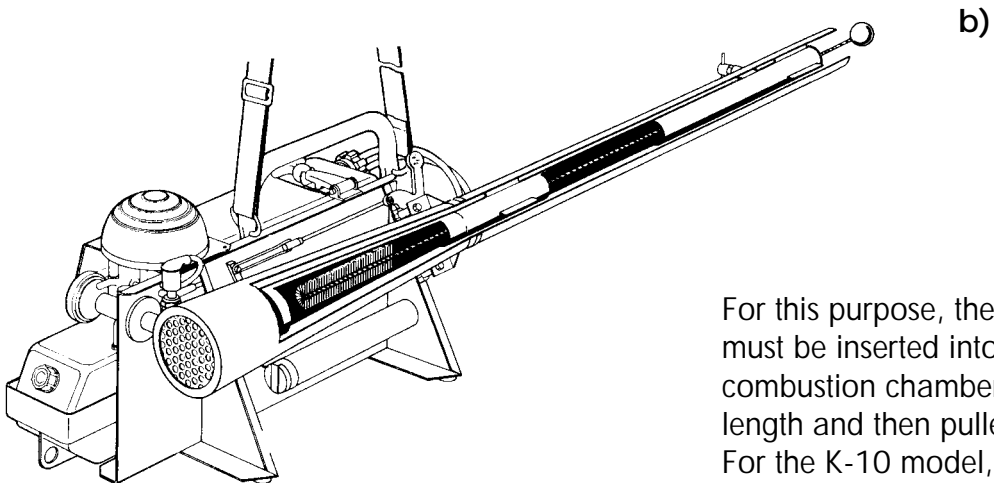
Condensation in the fuel tank causes considerable malfunctions since the fuel suction piece (No. 169z) and the red fuel valve (No. 7980) will clog. Only store the unit in a dry and cool place, protected from direct sunlight and dust.

## 10. MAINTENANCE

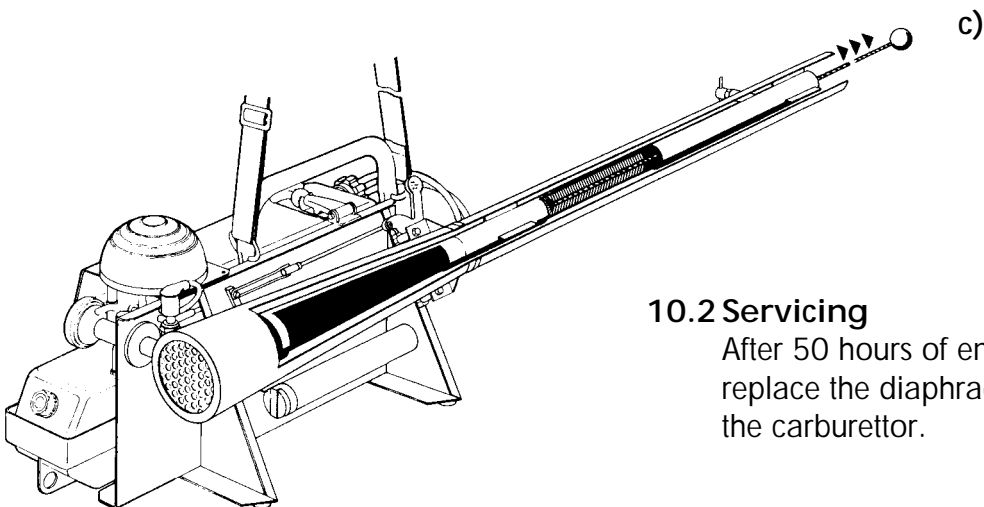


### 10.1 Cleaning the fogging pipe

After fogging critical agents, or every 10 hours of operation at the latest, the resonator (exhaust pipe) should be cleaned with the cleaning brush.



For this purpose, the cleaning brush must be inserted into the combustion chamber over its full length and then pulled again. For the K-10 model, this is facilitated by unscrewing the nozzle cane (Ref.No. 151) a little.



### 10.2 Servicing

After 50 hours of engine operation, replace the diaphragm (no. 72) on the carburettor.

# Trouble Shooting

Fault Identified:	Possible Cause:	Remedy:
-------------------	-----------------	---------

## 1. pulsFOG engine does not start

No fuel	Fuel tank is empty	Fill fuel tank
No fuel	Adjustable screw is closed	Open adjustable screw
No fuel reaches the carburettor when pressing the primer	Fuel nozzle is choked	Clean fuel nozzle and/or blow through ring slot nozzle
No fuel is visible in the transparent hose between fuel valve and carburettor	Fuel valve sticks or is choked Fuel filter is choked	Blow through or exchange the fuel valve
Fuel in the transparent hose flows back after pumping	Red fuel valve not tight Fuel valve dirty	Exchange fuel valve or try to clean it by low air pressure
No ignition spark at the spark plug	Batteries corroded or empty, spark plug defective or wet/dirty ignition coil defect  Micro-switch defective No contact between spark plug and spark plug socket	Replace batteries, exchange spark plug resp. dry/clean it. Space between electrodes of spark plug = 1 mm.  Replace micro-switch/ignition coil Fix the high-tension cable to the spark plug socket
No correct air supply through the membrane-valve	Membrane (72) is dirty and/or pasted up or assembled incorrectly	Assemble cleaned membrane-valve correctly (see drawing)

## 2. pulsFOG engine has bad running behaviour

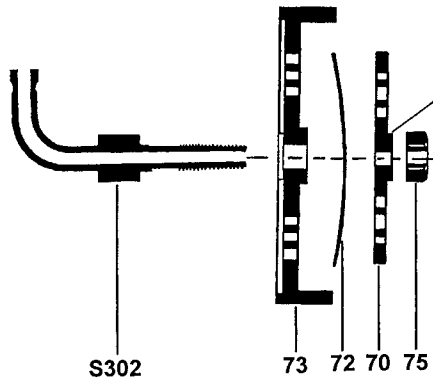
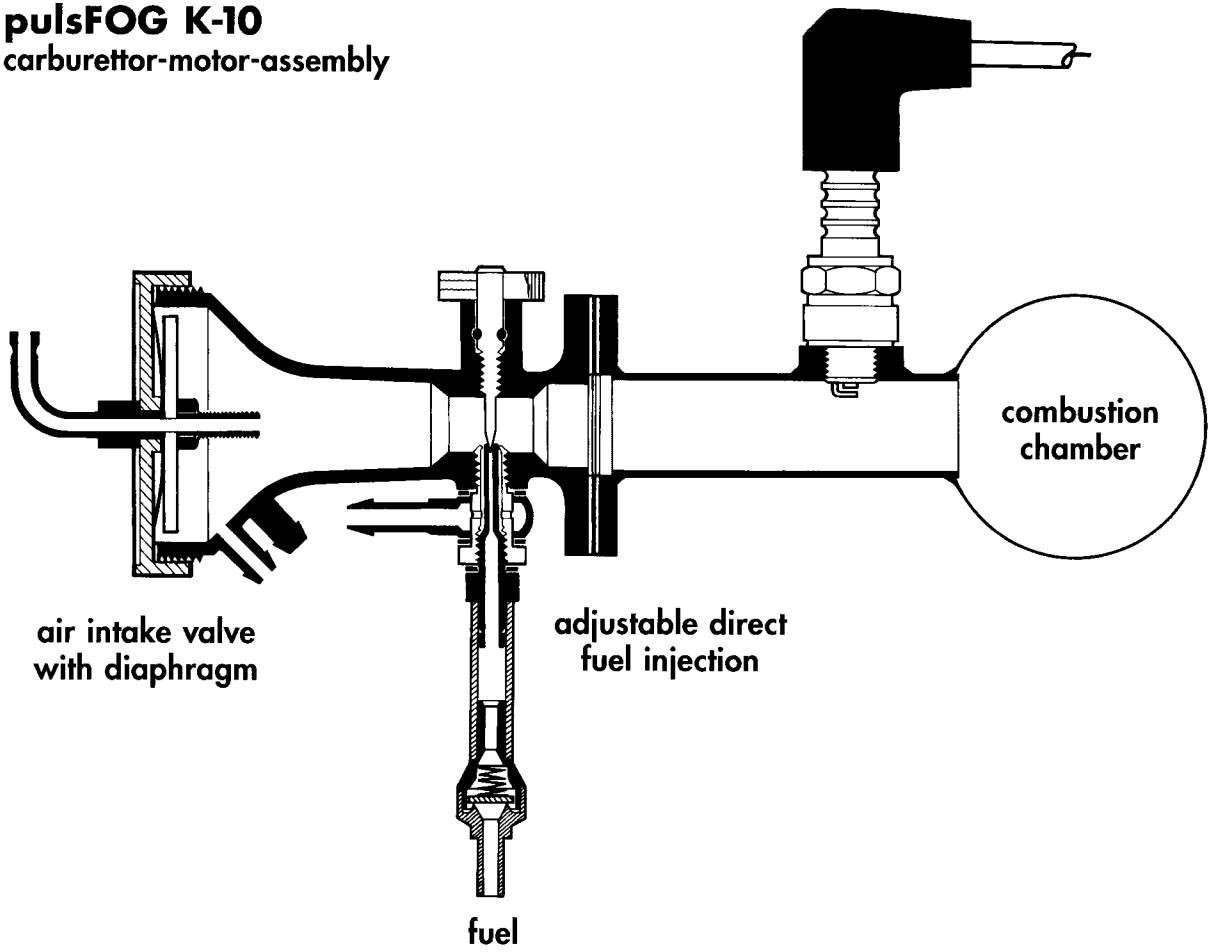
Air bubbles in the fuel	Fuel pipes or fuel valve leak	Tighten fuel pipes and exchange fuel valve
Fuel supply to the carburettor is not sufficient	Adjustable screw incorrectly adjusted	Turn adjustable screw to the left until the engine runs with a deep powerful sound
Air does not pass at the right measure	Membrane (72) is dirty and/or pasted up or assembled incorrectly	Clean membrane-valve and membrane resp. exchange or assemble correctly

<b>Fault Identified</b>	<b>Possible Cause</b>	<b>Remedy</b>
Fuel supply is irregular	Fuel nozzle is choked or destroyed by the adjustable screw	Clean fuel- and ring slot nozzle or replace fuel nozzle
Primer is blown up	Block valve is defective	Clean block valve, blow through or exchange it
Sparks are thrown out of the exhaust pipe	Resonator or combustion chamber is choked with chemical residues	Clean resonator and combustion chamber with cleaning brush

### 3. pulsFOG unit fogs irregularly or not at all

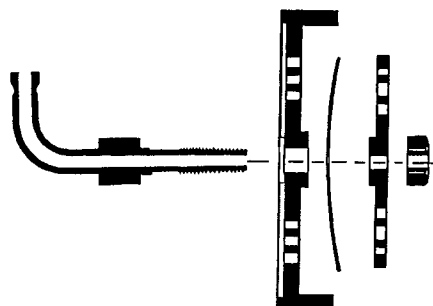
No pressure in chemical tank	Tank lid not tight, pressure valve (green/grey) defective	Close tank lid of chemical tank more tightly. Exchange laminate gasket (No. 119) at passage (No. 115) and replace pressure valve
Dosing nozzle(s) is (are) too hot	Idle running (without fogging) of the engine not longer than $\frac{1}{2}$ minute	Cool down cautiously dosing nozzle(s) and nozzle cane(s) with water
No fogging solution arrives at dosing nozzle(s).	Fogging solution conduit (122z), suction piece (139), fog tap (128z) or dosing nozzle (149) choked	Clean suction piece and/or dosing nozzle and/or fog tap, blow through with compressed air. Unscrew dosing nozzle and clean nozzle cane with a small screw-driver or a wire piece.
No fogging solution arrives at dosing nozzle(s).	Viton (Novoprene) tube in chemical tank is buckled	Replace Viton (Novoprene) tube

**pulsFOG K-10**  
carburettor-motor-assembly



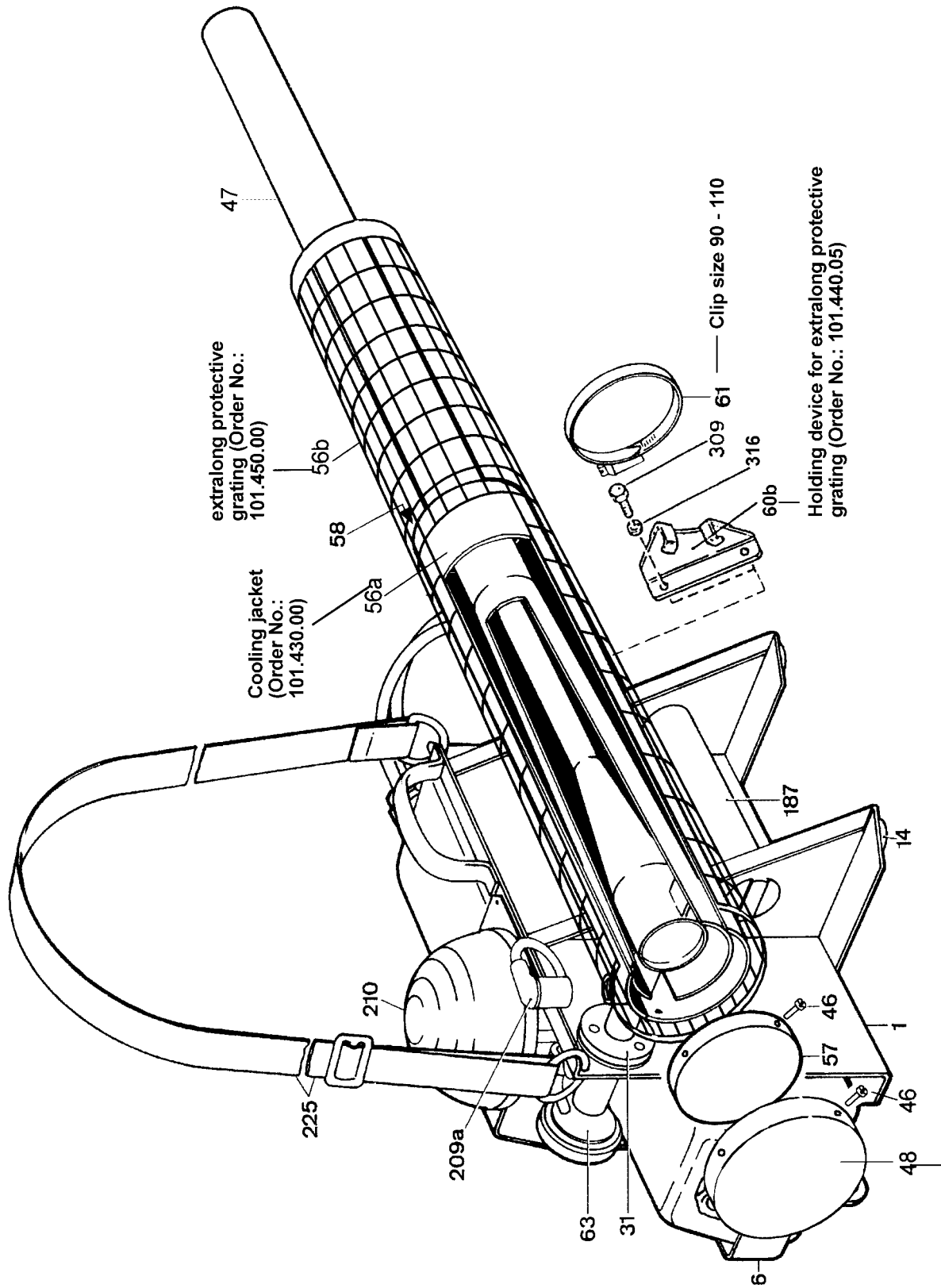
**Attention**

Correct assembly of air intake valve K-10:  
Distance spacer of support plate (No. 70)  
contacts counter nut (No. 75).  
Membrane (diaphragm No. 72)  
slightly bended as pictured.

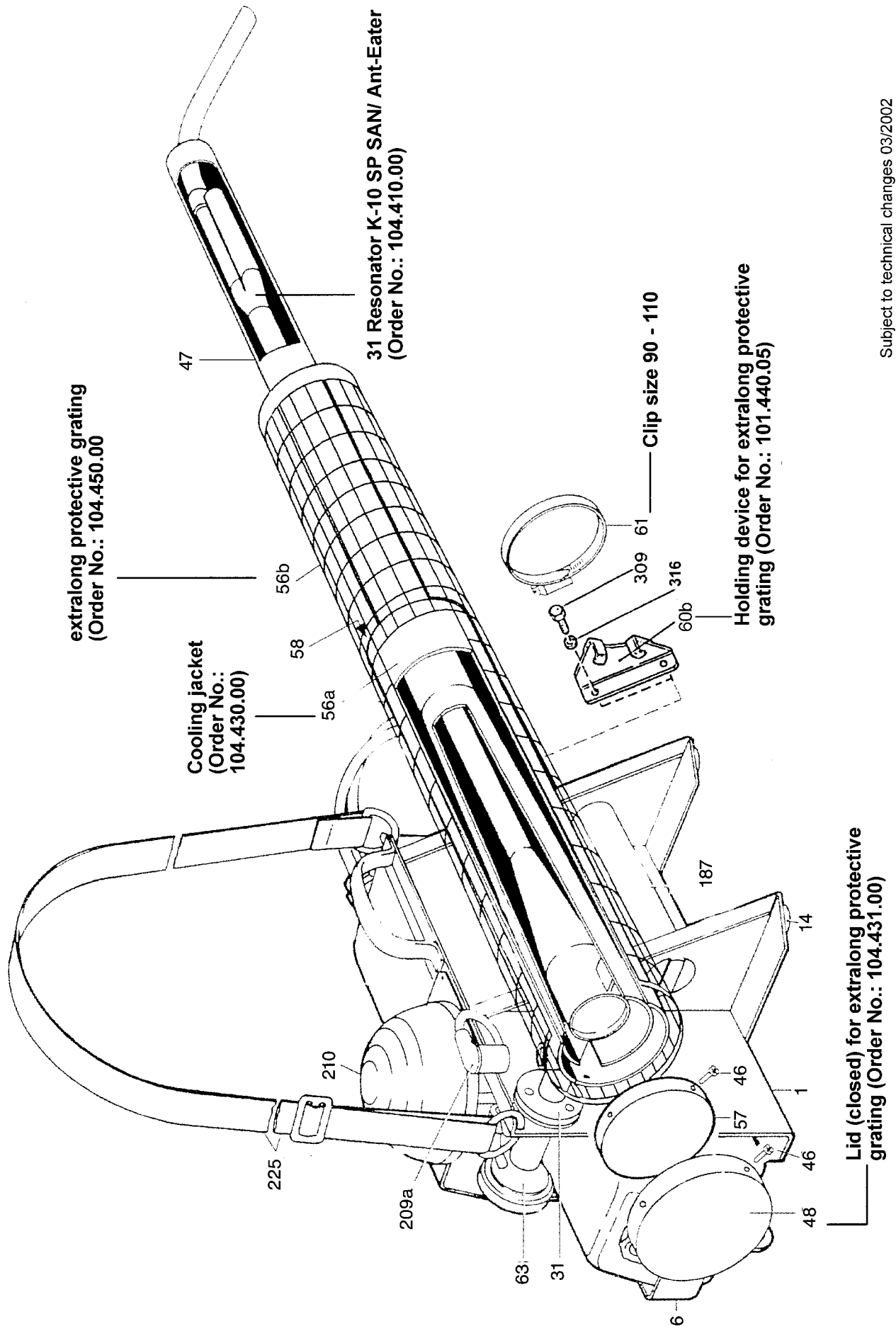


**Incorrect**

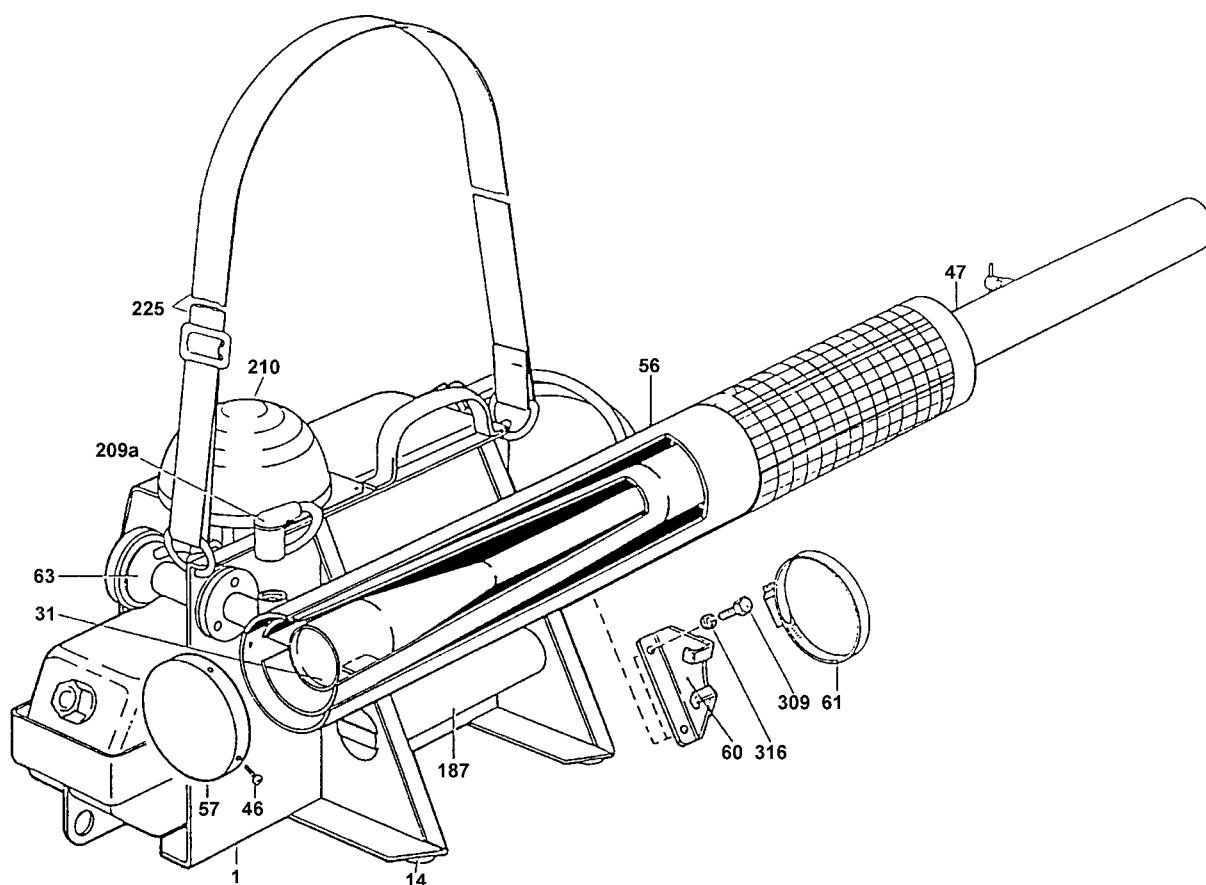
# Resonator side pulsFOG K-10 SP with extralong protective grating



Resonator side pulsFOG K-10 SP SAN /  
 Ant-Eater with extralong protective grating

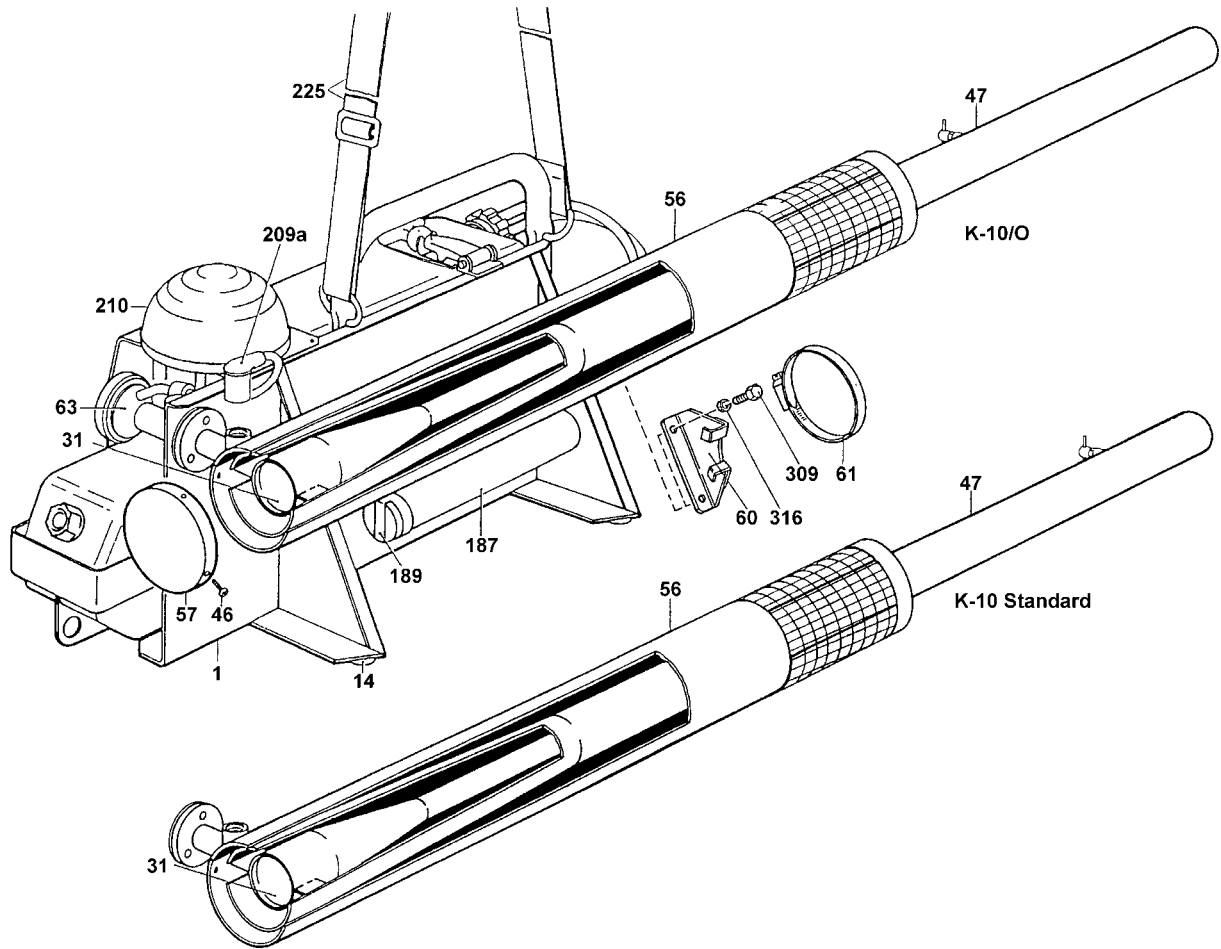


## Resonator side, type K-10 SP



Pos.No.	Description	Order No.
1	Chassis K-10 SP	101.100.00
14	Plastic feet	900.100.01
31	Resonator K-10 SP	101.410.00
46	Sheet head screw 3,9 x 9,5 DI N 7971	999.009.01
47	Diffusor K-10 SP	101.420.00
56a	Cooling jacket with protective grating	101.430.00
57	Lid for cooling jacket (closed)	100.433.00
60	Holding device for cooling jacket	100.440.00
61	Clip size 80-100	992.003.02
63	Carburettor (red) cpl. with diaphragm valve, air/fuel nozzle, adjust. screw cpl., carburettor gasket, screws, nuts	100.310.01
187	Battery pipe	900.220.01
209a	Spark plug cap	900.211.02
210	Primer (hand-pump) orange, cpl. with valve	900.340.01
210	Primer (hand-pump) (2 parts) black, cpl. with valve	900.341.03
225	Sling	900.000.02
309	Hexagon screw M5x10 DIN 931	999.004.02
316	Tooth lock washer (internal) d 5,3 DIN 6797	997.006.03
	Extralong protective grating K-10 SP	101.450.00
	Holding device for extralong prot. grating (incl. No. 61)	101.440.05

Resonator side, pulsFOG K-10/O  
 Resonator side, pulsFOG K-10 Standard



Pos.No.	Description	Order No.
1	Chassis K-10	100.100.00
14	Plastic feet	900.100.01
31	Resonator K-10/O	102.410.00
	Resonator K-10 Standard	103.410.00
46	Sheet head screw 3,9 x 9,5 DI N 7971	999.009.01
47	Diffusor K-10/O	102.420.00
	Diffusor K-10 Standard	103.420.00
56a	Cooling jacket with protective grating	100.430.00
57	Lid for cooling jacket (closed)	100.433.00
60	Holding device for cooling jacket	100.440.00
61	Clip size 80-100	992.003.02
63	Carburettor (red) cpl. with diaphragm valve, air/fuel nozzle, adjust. screw cpl., carburettor gasket, screws, nuts	100.310.01
187	Battery pipe	900.220.01
189	Holding device for battery pipe	100.116.01
209a	Spark plug cap	900.211.02
210	Primer (hand-pump) orange, cpl. with valve	900.340.01
	Primer (hand-pump) (2 parts) black, cpl. with valve	900.341.03
225	Slings	900.000.01
309	Hexagon screw M5x10 DIN 931	999.004.02
316	Tooth lock washer (internal) d 5,3 DIN 6797	997.006.03

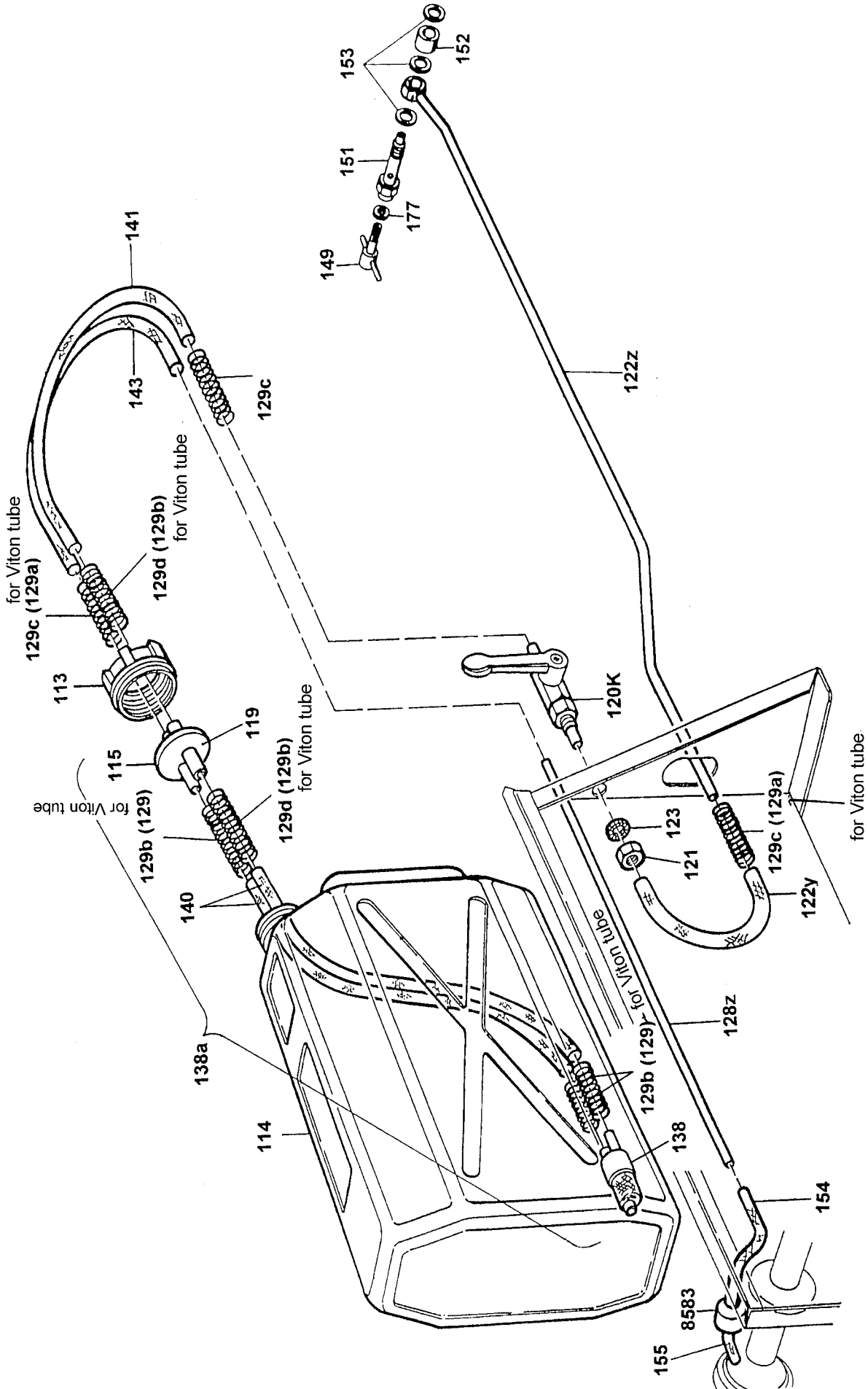


## Fog solution installation K-10 SP

Pos.No.	Description	Order No.
63	Carburettor (red) cpl. with diaphragm valve, air/fuel nozzle, adjust., screw cpl., carburettor gasket, screws, nuts	100.310.01
113	Lid with bore-hole (tri-cornered)	900.520.14
114	Solution tank with lid, 5 ltr.	900.510.05
115	Passage	900.520.10
119	Laminate gasket	900.520.11
120K	Fog tap cpl., (connecting piece: brass)	900.526.00
121	Fiat hexagon nut M10 x 1 (brass)	998.005.03
122y	Fog solution tube 150 mm, Viton	900.521.03
122z	Fog solution conduit (stainless steel)	100.531.01
123	Lock washer S	997.009.01
128z	Pressure pipe (plastic)	101.520.30
129	Supporting spring, 8 x 100	900.520.01
129a	Supporting spring, 8 x 150	900.520.02
129b	Supporting spring, 8,5 x 100	900.520.03
129c	Supporting spring, 8,5 x 160	900.520.04
129d	Supporting spring, 9 x 100	900.520.05
139	Single suction piece (PE, brass-weight)	900.520.21
139	Single suction piece (brass)	900.520.22
139	Single suction piece (PE, stainless-weight) "acid-resistant"	900.520.23
139a	Single suction piece (Polyamid) cpl. with Viton tube	900.523.01
140	Fog solution tube 310 mm, Viton	900.521.06
141	Fog solution tube 210 mm, Viton	900.521.04
142	Tube 280 mm, black	900.525.09
149	Dosing nozze	900.550.00
151	Nozzle cane	912.540.00
152	Distance husk 11,5 mm long (stainless steel)	900.560.01
153	Gasket 10/14/1 Cu	993.001.02
153	Gasket 10/14/1 Al "acid-resistant"	993.003.02
154	Tube 75 mm, black (pulsFOG No. S311)	900.525.04
155	Tube 35 mm, black	900.525.01
177	Gasket 8/12/1 Cu	993.001.01
177	Gasket 8/12/1 Al "acid-resistant"	993.003.01
8583	Pressure valve (green/grey)	900.323.00

subject to technical changes April 2002

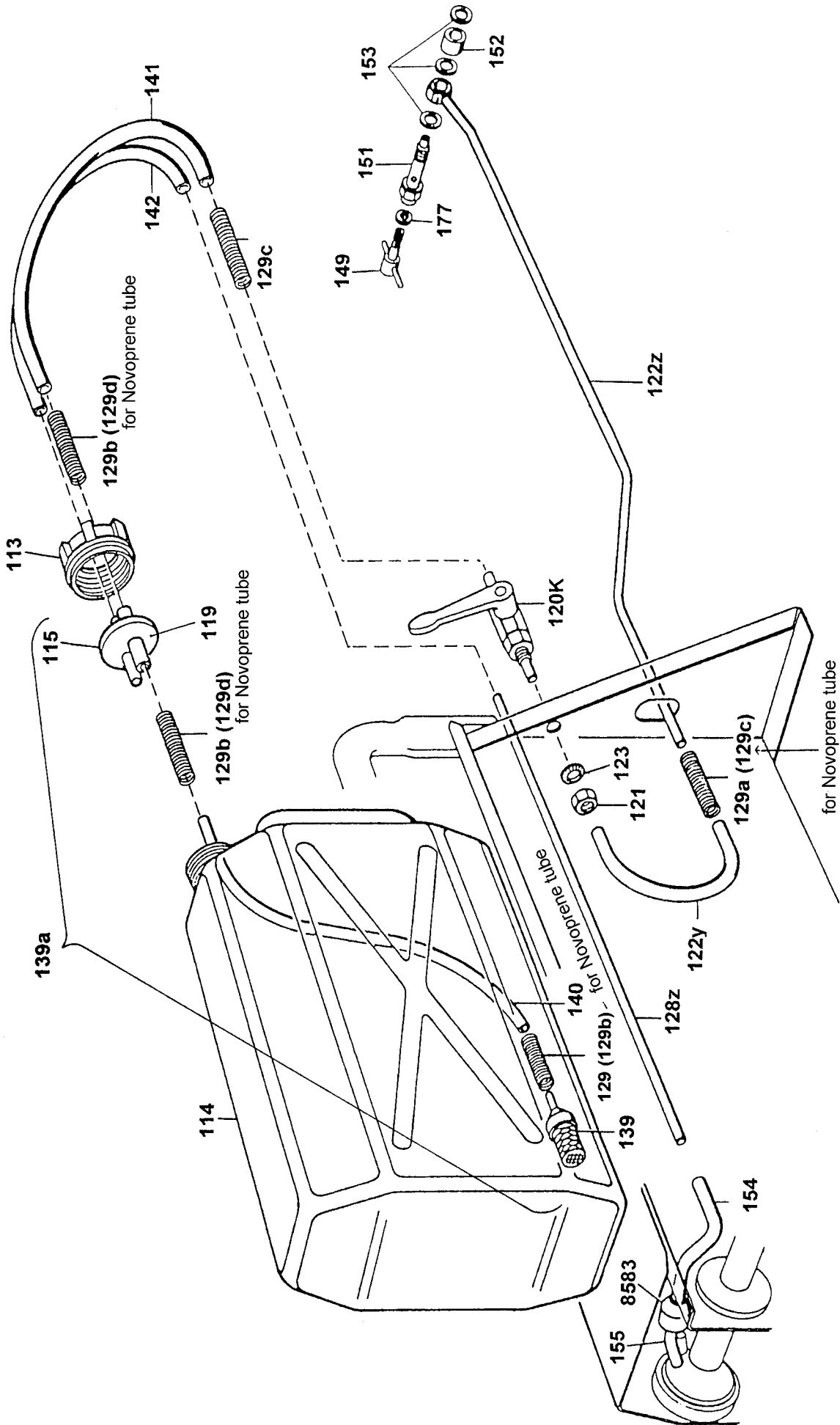
# Fog solution installation K-10 Standard



## Fog solution installation with air-agitator K-10 Standard

Pos.No.	Description	Order No.
63	Carburettor (red) cpl. with diaphragm valve, air/fuel nozzle, adjust. screw cpl., carburettor gasket, screws, nuts	100.310.01
113	Lid with bore-hole (tri-cornered)	900.520.14
114	Solution tank with lid, 10 ltr.	900.510.10
115	Passage	900.520.10
119	Laminate gasket	900.520.11
120K	Fog tap cpl., (connecting piece: brass)	900.526.00
121	Flat hexagon nut M10 x 1 (brass)	998.005.03
122y	Fog solution tube 150 mm, Novoprene	900.522.03
122z	Fog solution conduit (stainless steel)	103.531.00
123	Lock washer S	997009.01
128z	Pressure pipe (plastic)	101.520.30
129	Supporting spring, 8 x 100	900.520.01
129a	Supporting spring, 8 x 150	900.520.02
129b	Supporting spring, 8,5 x 100	900.520.03
129c	Supporting spring, 8,5 x 160	900.520.04
129d	Supporting spring, 9 x 100	900.520.05
138	Suction piece for air-agitator	900.520.23
138a	Air-agitator cpl. with Novoprene tube	900.524.04
140	Fog solution tube 420 mm, Novoprene	900.524.04
141	Fog solution tube 210 mm, Novoprene	900.522.07
143	Air tube 280 mm, Novoprene	900.522.05
149	Dosing nozzle	900.550.00
151	Nozzle cane	912.540.00
152	Distance husk 11,5 mm long (stainless steel)	900.560.01
153	Gasket 10/14/1 Cu	993.001.02
153	Gasket 10/14/1 Al "acid-resistant"	993.003.02
154	Tube 75 mm, black	900.525.04
155	Tube 35 mm, black	900.525.01
177	Gasket 8/12/1 Cu	993.001.01
177	Gasket 8/12/1 Al "acid-resistant"	993.003.01
8583	Pressure valve (green/grey)	900.323.00

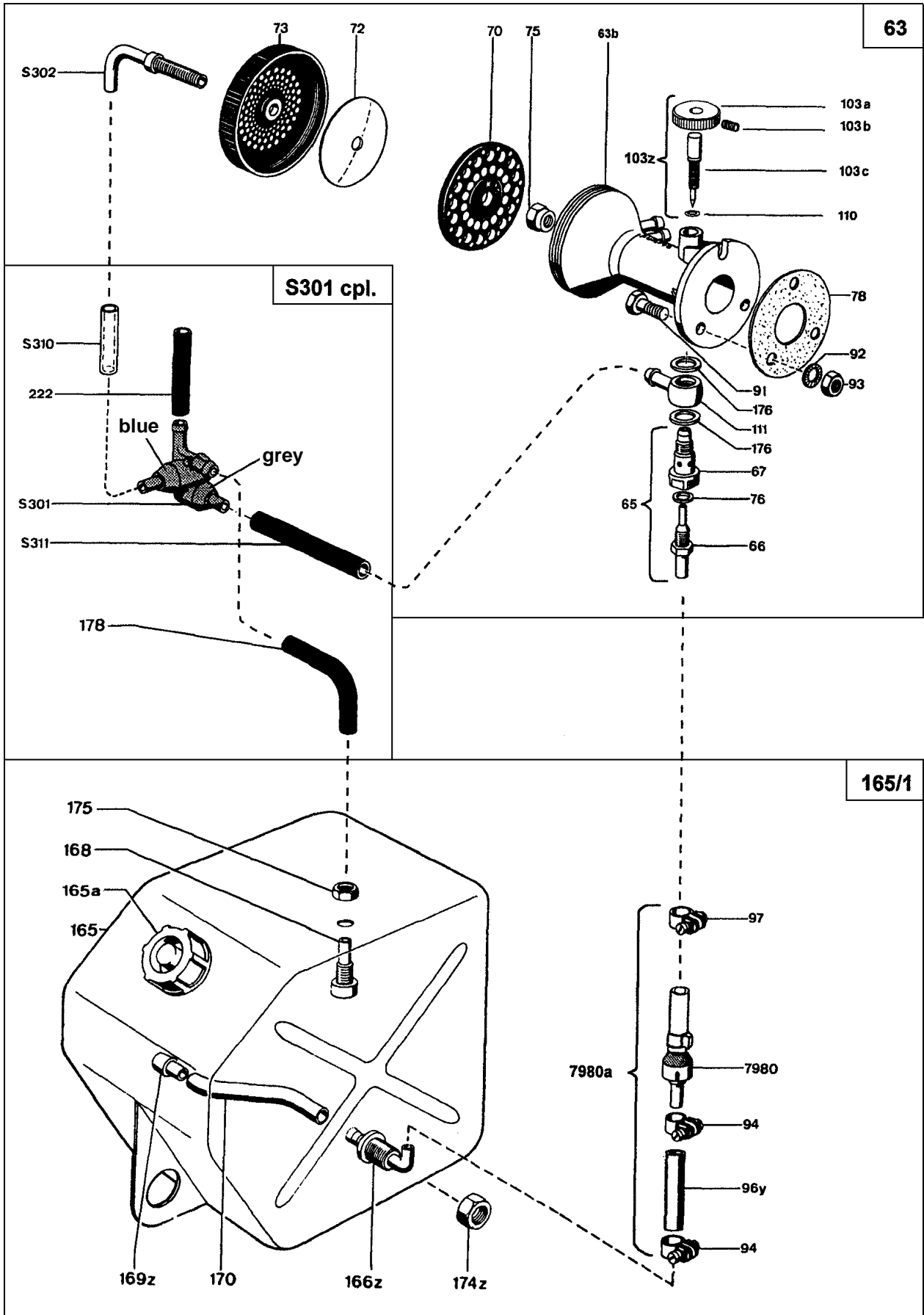
# Fog solution installation K-10/O



## Fog solution installation K-10/O

Pos.No.	Description	Order No.
63	Carburettor (red) cpl. With diaphragm valve, air/fuel nozzle, adjust, screw cpl., carburettor gasket, screws, nuts	100.310.01
113	Lid with bore-hole (tri-cornered)	900.520.14
114	Solution tank with lid, 10 ltr.	900.510.10
115	Passage	900.520.10
119	Laminate gasket	900.520.11
120K	Fog tap cpl., (connecting piece: brass)	900.526.00
121	Fiat hexagon nut M10 x 1 (brass)	998.005.03
122y	Fog solution tube 150 mm, Viton	900.521.03
122z	Fog solution conduit (stainless steel)	100.531.01
123	Lock washer S	997.009.01
128z	Pressure pipe (plastic)	101.520.30
129	Supporting spring, 8 x 100	900.520.01
129a	Supporting spring, 8 x 150	900.520.02
129b	Supporting spring, 8,5 x 100	900.520.03
129c	Supporting spring, 8,5 x 160	900.520.04
129d	Supporting spring, 9 x 100	900.520.05
139	Single suction piece (PE, brass-weight)	900.520.21
139	Single suction piece (brass)	900.520.22
139	Single suction piece (PE, stainless-weight) "acid-resistant"	900.520.23
139a	Single suction piece (Polyamid) cpl. with Viton tube	900.523.03
140	Fog solution tube 420 mm, Viton	900.521.07
141	Fog solution tube 210 mm, Viton	900.521.04
142	Tube 280 mm, black	900.525.09
149	Dosing nozzle	900.550.00
151	Nozzle cane	912.540.00
152	Distance husk 11,5 mm long (stainless steel)	900.560.01
153	Gasket 10/14/1 Cu	993.001.02
153	Gasket 10/14/1 Al "acid-resistant"	993.003.02
154	Tube 75 mm, black	900.525.04
155	Tube 35 mm, black	900.525.01
177	Gasket 8/12/1 Cu	993.001.01
177	Gasket 8/12/1 Al "acid-resistant"	993.003.01
8583	Pressure valve (green/grey)	900.323.00

# Starting installation K-10 Standard, K-10/O, K-10 SP

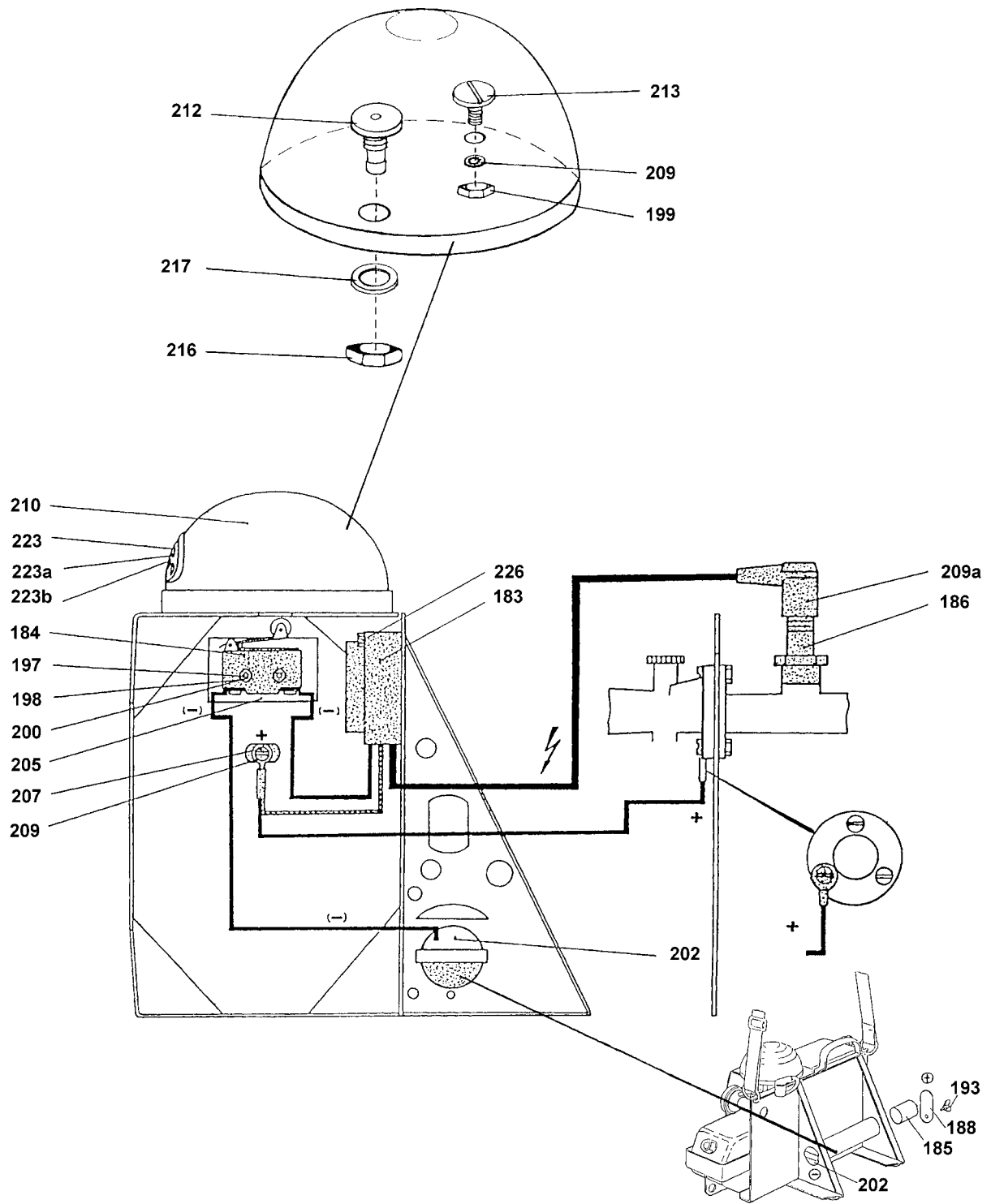


## Starting installation K-10 SP, K-10 Standard, K-10/O

Pos.No.	Description	Order No.
63	Carburettor (red) cpl. with diaphragm valve, air/fuel nozzle, adjust, screw cpl., carburettor gasket, screws, nuts	100.310.01
63a	Carburettor (red) cpl. (without diaphragm valve), with air/fuel nozzle, adjust. screw cpl., carburettor gasket, screws, nuts	100.310.02
63b	Carburettor (red) body	100.310.00
65	Air-fuel nozzle K-10 cpl.	100.311.00
66	Fuel nozzle, size 8	100.311.01
67	Ring slot nozzle K-10	100.311.02
70	Support plate	900.313.01
72	Teflon-diaphragm	900.313.02
73	Membrane thread (diaphragm valve cap)	900.313.03
75	Counternut M6 DIN 985	998.002.02
76	Gasket 6/12/1 Fi	993.002.01
78	Carburettor gasket (Abil)	900.310.01
91	Hexagon head screw M6x20 DIN 931	999.004.06
92	Tooth lock washer (external) d 6,4 DIN 6797	997005.04
93	Hexagon nut M6 DIN 934	998.001.06
94	Tube clip (size 8)	992.001.02
96y	Fuel tube (blue)	923.353.01
97	Tube clip (size 9)	992.001.03
103a	Knurled washer cpl.	900.312.03
103b	Locking screw M4x8 DIN 551	999.007.01
103c	Threaded spindle	900.312.01
110	O-ring	993.005.01
103z	Adjustable screw cpl. with O-ring	900.312.00
111	Ring piece	900.311.03
165	Fuel tank with bore-holes and lid (d 32 mm)	912.351.01
165/1	Fuel tank with fuel valve cpl.	100.352.00
165a	Lid for fuel tank (d 32 mm)	900.350.01
165a	Lid for fuel tank (d 25 mm)	900.350.02
166z	Connecting piece (bent)	900.354.03
168	Aeration piece	900.354.04
169z	Fuel suction piece	900.354.01
170	Fuel suction tube, Viton	900.354.02
174z	Hexagon nut (flat) M10 x 1,75 (brass)	998.005.04
175	Hexagon nut (flat) M8 (brass)	998.005.02
176	Gasket 10/14/1 Fi	993.002.02
178	Tube 85 mm, black	900.525.05
222	Air tube 40 mm, black	900.525.02
S301	Block valve (blue/grey/grey)	912.331.00
S302	Starting nozzle	900.313.04
S310	Tube 40 mm, transparent	900.355.02
S311	Tube 75 mm, black (pulsFOG Pos.No.154)	900.525.04
7980	Fuel valve (red) with transparent tube	900.321.01
7980a	Fuel valve (red) cpl. with tubes	923.321.02
8583	Pressure valve (green/grey)	900.323.00

subject to technical changes April 2002

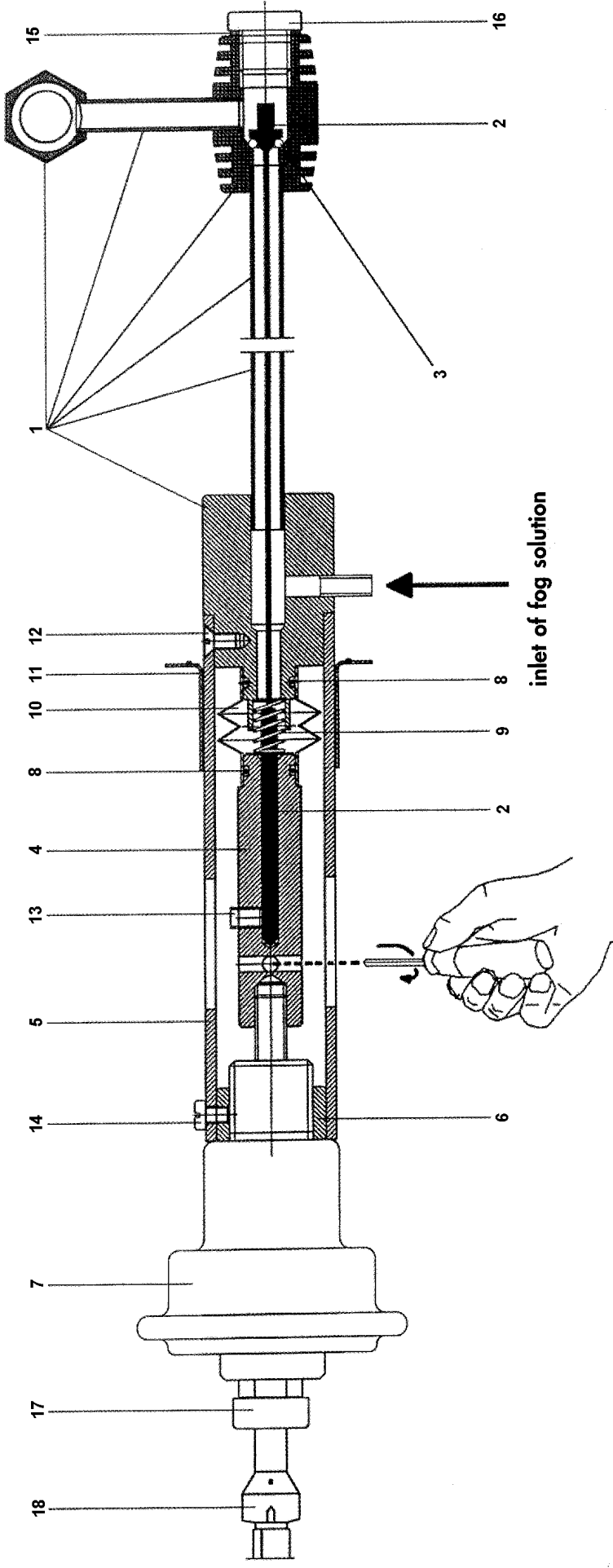
# Primer and ignition installation



## Primer and ignition installation pulsFOG K-10 SP, K-10 Standard, K-10/O

Pos. No.	Description	Order No.
183	Ignition device	900.211.01
184	Micro - switch	900.210.00
185	Battery 1,5 V	900.221.00
186	Spark plug	900.212.00
188	Lid for battery pipe	900.220.02
193	Butterfly screw M5 x 10 DIN 316	999.008.01
197	Fillister head screw M3 x 20 DIN 84	999.001.02
198	Hexagon nut M3 DIN 934	998.001.01
199	Hexagon nut M5 DIN 934	998.001.05
200	Spring washer M3 DIN 127A	997.003.01
202	Contact piece with cable	900.220.00
205	Rubber washer 45 x 30 x 3	900.210.01
207	Fillister head screw M5 x 6 (brass)	999.001.07
209	Tooth lock washer (internal) d 5,3 DIN 6797	997.006.03
209a	Spark plug cap	900.211.02
210	Primer (hand pump) orange, cpl. with air valve	900.340.01
210	Primer (hand pump) black (two piece), with air valve	900.341.03
210a	Primer (hand pump) orange, body	900.340.00
210a	Primer (hand pump) block (two parts), body	900.341.00
	Primer (hand pump) block - bottom	900.341.01
	Primer (hand pump) block - top	900.341.02
212	Connection piece for primer (orange), M 12	900.342.01
212	Connection piece for primer (black), M 12 (former version)	900.342.06
	Connection piece for primer (black), M 8 (new version)	Z000.80.00
213	Flat headed screw M5 x 12 DIN 85A for primer (orange)	999.005.01
213	Flat headed screw M5 x 16 DIN 85A for primer (black)	999.005.02
216	Hexagon nut M 12, flat (for primer orange and former version black)	998.005.05
	Hexagon nut M8, flat (new version black)	N000.46.00
217	Plastic washer d 13 (for primer orange and former version black)	900.342.02
	Plastic washer d8 (new version black)	Z000.81.00
223	Diaphragm for air valve	900.342.04
223a	Air valve without diaphragm	900.342.03
223b	Air valve with diaphragm	900.342.05
226	Hexagon screw M5 x 30 DIN 931	999.004.04

Automatic cut-off device K-10 SP and K-10/O  
(Order No. G00057.00)



revolve to adjust tightness of closing valve

No.	Description	Order No.	Amount	No.	Description	Order No.	Amount
1	Fog solution conduit cpl.	G00060.00	1	10	Expansion	Z00119.00	1
2	Valve linkage	G00061.00	1	12	Flat headed screw DIN 965 M 3x6	N00082.00	1
3	O-ring Hflfluor 2,57 x 1,78	N00085.00	1	13	Set screw DIN 914 M 4x8	N00083.00	1
4	Adapter	G00059.00	1	15	Gasket Cu 10 x 14 x 1	N00033.00	1
5	Mounting pipe	Z00155.00	1	16	Screw plug, brass, M 10x1	N00084.00	1
7	Diaphragm assembly	Z00181.00	1	17	Fixing nut for tube 8x1 R 1/8"	N00076.00	1
8	O-ring 7 x 1,5 Viton	N00039.00	2	18	Relief valve	G00058.00	1
9	Valve spring	N00081.00	1				